

AlcoLimit[®] RBT Plus Wallmount

User Manual



AlcoLimit Breathalysers Pty. Ltd.
P.O. Box 164,
Burleigh Heads, QLD 4220
Ph: 1300 667 661
www.alcolimit.com.au

Version 1.1 2023

CONTENTS

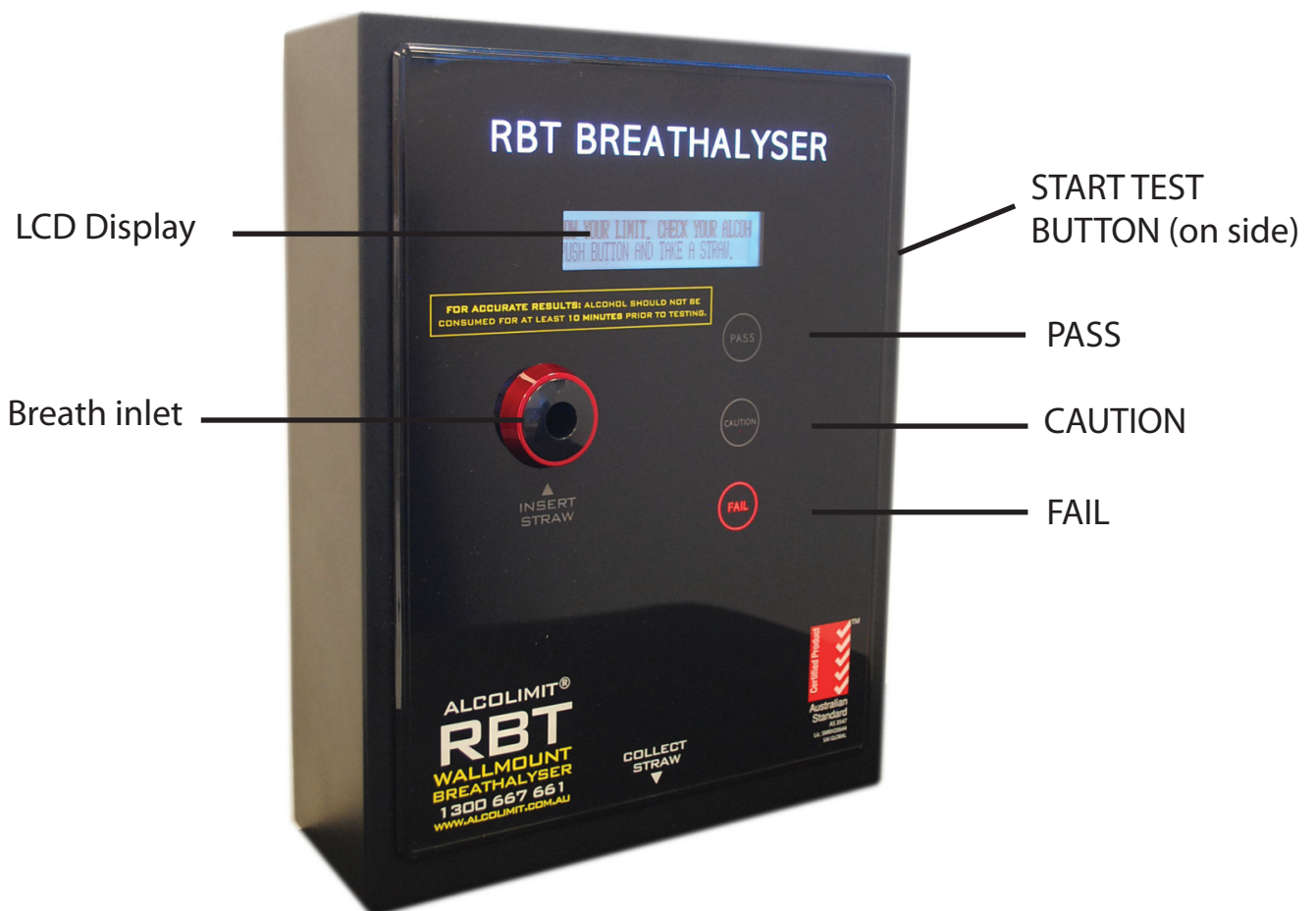
Description	Page
Parts of your breathalyser	4
Specifications	5
Installation.....	6
Basic operation	7
Results Displayed and Interpretation	8
Maintenance Guide and Replacing Sensor Module.....	9-10
Recalibrating the Sensor Module	11
Error Messages	12
General Warnings.....	13
Warranty	14
Disclaimer	14-15
Service Record	16

IMPORTANT INFORMATION

If you do not follow the instructions for use your test results may be inaccurate and your warranty may become void.

For most accurate results, it's important to wait at least 20 minutes after smoking, eating or drinking before testing. This is a universal principle for all breathalysers, not just yours. The reason being is that if you have recently consumed alcohol, the residual alcohol in your mouth is very high and can cause a false reading. Additionally, waiting 20 minutes allows the alcohol to be absorbed from your stomach into your bloodstream, contributing to more accurate test results.

PARTS OF YOUR BREATHALYSER



Breath Inlet: This is where the user places the straw to blow into the machine. The sampling time is 5 seconds.

Start Button: Located on the right side of the machine. Press the RED button to start the count down.

LCD display: The instructions for use are displayed on the LCD.

SPECIFICATIONS

Recommended Usage	Professional - 6 monthly Calibration
Sensor Type	Replaceable Electrochemical Fuel Cell
Accuracy	Conforms to Australian Standard AS3547:1997
Range %BAC	0.000 - 0.250
Display	LCD
Warm-up time	20 seconds - 2 minutes
Breath Sampling Time	5 seconds
Temperature	Operation 0°C - 40°C Storage 0°C - 50°C
Housing	Metal casing
Weight	4kgs
Power Source	AC 110~220, 50/60 HZ, 0.5A input DC 12V, 1.5A output Connects to power point
Dimensions	13cm x 64cm x 33cm
Warranty	12 Month Limited Warranty

Specifications are subject to change for the purpose of product improvement.

For all after-sales service and enquiries, please contact the manufacturer:

AlcoLimit Breathalysers Pty. Ltd.

P.O. Box 164

Burleigh Heads, QLD 4220

Australia

Ph: 1300 667 661

Website: www.alcolimit.com.au

Email: sales@alcolimit.com.au

INSTALLATION

Installation should be performed by a qualified tradesperson.

We recommend 2 people perform this installation for ease of aligning the unit.

To install the RBT Wallmount Breathalyser on a wall you will need:

- 1 x Drill (not included)
- 1 x Philips-head screwdriver (not included)
- 2 x Screws & Wall plugs to suit the wall you will attach the unit to (not included)
- 1 x RBT Wallmount Breathalyser (included)
- 1 x Power pack (included)

1. Have person 1 hold the unit while the other person marks the holes in the wall with a pencil. (Simply fold the back panel out and put it against the wall, then stencil the holes on the wall with a pencil).
2. Put the breathalyser down, drill holes and insert wall plugs or your preferred fitting.
3. Fold out the back panel and insert the screws (or chosen fitting) through the holes in the back panel into the wall. Ensure it is secure.
4. The breathalyser is now attached and you should be able to pull the front panel outward from the wall and access the inside for servicing.
5. To secure the breathalyser from tampering always lock the casing with the key provided
6. Plug in the power pack underneath and plug it into a power socket. You may feed it through a wall or use conduit to secure it to the wall and run it to the power point.
7. Turn on the power point and the unit will power up ready for use.

Please phone AlcoLimit Customer Service on 1300 667 661 if you have any questions regarding installation.

BASIC OPERATION

ON-SCREEN GUIDANCE

Below are the steps followed by the user of the RBT Wallmount and the on-screen guidance.

The following is displayed until the start button is pressed:

KNOW YOUR LIMIT. CHECK YOUR ALCOHOL LEVEL.
PUSH BUTTON AND TAKE A STRAW.

The device will then prepare for testing:

WARMING UP, PLEASE WAIT....

When it is ready for testing the following will appear:

BLOW STEADILY UNTIL TONE ENDS
"SAMPLING"

The user will then need to blow into the unit for 5 seconds until the following appears:

SAMPLING IS COMPLETED.
"ANALYSING"

If you stop blowing or you do not breathe strongly enough, "**Flow Error**" will be displayed on LCD. The device does not sense a proper breath sample, please wait and try again and the machine will automatically prepare for a retest.

This process will continue until you finally obtain a correct result.

If the %BAC result reaches the maximum limit on the RBT (over 0.250%BAC) the software will prevent another test for approximately 4 minutes. This is a safety precaution to prevent people using the device for drinking games.

RESULTS DISPLAYED & INTERPRETATION

When the measurement is complete, the blood alcohol concentration (eg. 0.052%BAC) will appear on the LCD display.

A visual guide on the front panel will indicate whether or not a person is affected by alcohol. We do not recommend drinking and driving or working with any amount of alcohol in a person's system.

The message for each level is:

PASS = 0.000%BAC

Very little or no alcohol has been detected.

CAUTION = 0.001-0.049%BAC

A moderate amount of alcohol has been detected.

FAIL = 0.050%BAC upwards

A high level of alcohol has been detected.

PRECAUTIONS

1. During testing, any alcohol traces left in a person's mouth will increase the value of the blood alcohol concentration level. Remove these traces before testing. Wait 20 minutes after drinking or consuming medications with alcohol before testing.
2. When a person exhales through the straw, some unintentional salivation may affect the built-in equipment. However, please be aware that placing any other liquids or materials into the straw may cause the sensor to malfunction.
3. Cigarette smoking may also increase the blood alcohol concentration value. Allow ten minutes after smoking before testing.

SEE WARNINGS SECTION FOR FURTHER PRECAUTIONS

IMPORTANT INFORMATION

This device is tested as a 0.05% BAC device (0.05%BAC is equal to 0.05grams of alcohol per 100ml of blood).

ALCOLIMIT RBT Wallmount has a range of 0.000-0.250 %BAC.

PLEASE NOTE: Alcohol vapour on your breath will cause a higher reading. We recommend having a glass of water prior to testing and waiting at least 20 minutes after your last drink for accurate results. Not waiting the required 20 minutes will saturate the sensor unnecessarily and may cause sensor damage. This is not covered under your warranty. Please always wait 20 minutes after consuming any alcohol to avoid this problem.

MAINTENANCE GUIDE

The software product is easy to maintain, and its operating environment can be managed onsite without the need for specialist service technicians.

In order to service the RBT at your premises you will need to complete an online training course to become certified to service the device in accordance with Australian Standard AS/NZS3547:1997. *Details are available at www.alcolimit.com.au/elearning.*

REPLACING THE SENSOR MODULE

The AlcoLimit RBT Plus is uniquely designed to allow customers to replace the fuel cell sensor themselves.

To ensure accuracy of the RBT unit and maintain its calibration the following maintenance needs to be performed when the calibration reminder appears.

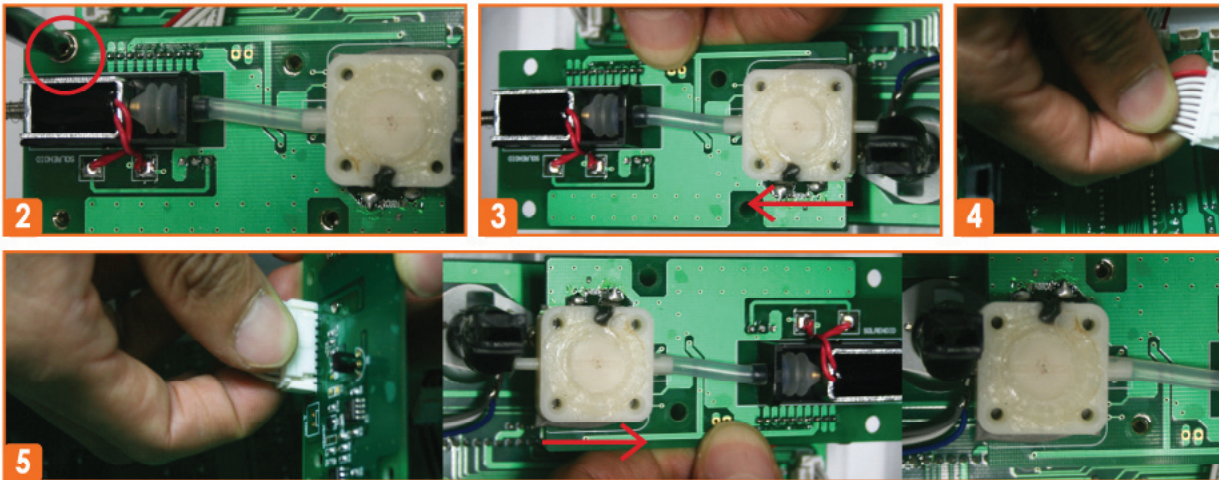
- “Calibration required shortly” will be displayed on the LCD screen.
- You have 5 days to perform the maintenance procedure.
- After 5 days the RBT breathalyser will activate its lockout function and will not work until this procedure is completed.

Before starting this procedure please ensure you have a new pre-calibrated sensor module on hand to replace the used one with.

We also recommend you keep a log of the following information:

- **Date of sensor change**
- **Number of uses**
- **Number of hours**
- **Serial number of sensor used**
- **Name/Initials of staff member**
- **Certification number of staff member**
(located on the staff members ‘Certificate of Attainment’)

*Ensure your hands are clean and free from oil or grease prior to touching the circuit board.
You will need 1 phillips head screwdriver.*



1. **Turn the power off. (Very Important!!)**
2. Unlock the AlcoLimit RBT and open the unit
3. Locate the sensor module and remove the 4 screws as indicated above
4. Pull out the sensor board above in the direction of the arrow.
5. Unplug the connector (press the clip) and insert the new sensor board
6. Plug in connector (ensuring the correct orientation), push the sensor board in its correct place and replace the 4 screws tightly.
7. Turn on the power and the AlcoLimit RBT will perform an accuracy check.
8. The replacement is complete.

If the front display remains blank (no power) the sensor is not connected correctly. Disconnect and reconnect the white cable again, ensuring it is the correct orientation

With each new sensor purchased or calibrated by AlcoLimit Breathalysers a "Calibration Certificate" can be ordered for \$22. If you require this for auditing purposes please request at the time of purchase/calibration.

Be sure to file this in the correct place for record keeping purposes.

RECALIBRATING THE SENSOR MODULE

Return the used sensor to AlcoLimit Breathalysers for recalibration. Each sensor can be recycled multiple times before a new one needs to be purchased (subject to volume of use).

For recalibration, return your sensor to:

AlcoLimit Breathalysers Pty. Ltd.
Recalibrations Dept.
P.O. Box 164
Burleigh Heads, QLD 4220

The cost of recalibration is \$85.00. If you require a 'Calibration Certificate', please add \$22. Return freight is included.

Please be sure to include an '**RBT RECALIBRATION REQUEST FORM**'.

A copy is included with your initial purchase or email sales@alcolimit.com.au for a copy. A new form will be returned to you with each recalibration.

Your sensor will be tested, recalibrated and returned to you within 2-3 working days. We recommend you always have a spare sensor on hand to minimise machine downtime.

ERROR MESSAGES

1. **Flow error**

If you stop blowing or you do not breathe strongly enough, "Flow Error" will be displayed on the LCD. Please wait and try again and the machine will return to the testing mode.

2. **Sensor error**

A. Check if the alcohol sensor is in the right place on the board.
B. If you still have the error message, replace the sensor.

3. **The screen is blank after replacing the sensor.**

A. The sensor is not connected correctly.
B. Check you have connected the white cable in the correct direction and it is clipped to the connector.

TROUBLESHOOTING GUIDE

1. **The machine is plugged in, but there is no power.**

Make sure that the line attached to the power adapter is connected correctly to the power socket on the bottom of the machine. Make sure the power point is turned on.

2. **There is no audible alert or sound.**

Call AlcoLimit Breathalysers during office hours (9-5pm M-F) and they will guide you through a quick sound test

3. **You blow, but the machine does not respond.**

Check if the display window shows an error eg: "Sensor error". If so, refer to error messages above.

4. **After testing, the machine does not go back to the waiting mode.**

The machine displays the result %BAC for 10 seconds. In order to go back to the testing mode, the alcohol blown into the machine must be eliminated completely.

The amount of alcohol increases the time required for this elimination to be completed, but it normally does not exceed 4 minutes. If it takes more than four minutes, the sensor may be malfunctioning. Replace the sensor and if the error continues contact AlcoLimit Breathalysers on 1300 667 661.

Please note that the software has an inbuilt function to prevent people using the device for 'drinking games'. If a level of 0.250%BAC or over is blown into the machine it will not allow any additional tests for 4 minutes.

FOR FURTHER ASSISTANCE PLEASE CALL 1300 667 661.

GENERAL WARNINGS (Please read carefully)

- Closed rooms with poor ventilation, pollution, smoke or air conditioning may delay the time for resetting between tests.
- Not waiting at least 20 minutes after your last alcoholic drink will cause inaccurate readings. Have a glass of water or other non-alcoholic beverage to minimise alcohol vapour & residue in your mouth as this can cause a higher reading.
- Retest 2-3 times to obtain a reliable test result. We suggest you then wait a further 10 - 20 minutes and retest to check that your level has stabilised and not increased.
- Blood alcohol concentration can continue to rise for up to 2 hours after the cessation of drinking. If the reading is close to the limit it is advised to wait a further 10-20 minutes and retest to determine whether your %BAC has stabilised.
- It can take 10 hours or more to return to a zero reading after a high blood alcohol level has been reached. A further test should be carried out later in the day or the following morning.
- If you are taking ALCOLIMIT RBT overseas or using it at a different altitude please be aware that the calibration may be affected.
- Do not blow cigarette smoke or liquid into the tester.
- Alcohol affects each individual differently depending upon many factors; type of alcohol, muscle mass, weight, full or empty stomach, immune system, gender, regularity of drinking.
- Those with diabetes may find they can drink large volumes of alcohol yet still read 0.00%BAC. This does not mean your ability to drive is not impaired.
- Do not use ALCOLIMIT RBT as a tool to drink and drive or operate machinery. There is no safe level of alcohol consumption before driving or operating machinery.

STORAGE CONDITIONS

Keep free from dust, dirt, and small particles as they may clog the sensor.

Keep in a cool dry place.

Keep out of extreme temperatures.

Keep out of reach of children.

Keep away from electrical interference.

Do not drop, knock or shake.

WARRANTY

Manufacturer warrants for one calendar year the product to be free from defects in workmanship or materials (excluding calibration) in normal service from the date of purchase. Manufacturer's obligation under this warranty is limited to replacing or repairing the unit if returned along with proof of purchase. This warranty is void if unit has been tampered with, misused, dropped, maliciously damaged or used for any purpose other than that intended.

The cost to return the unit to the manufacturer's service centre is at the expense of the consumer. The consumer is welcome to drop the unit off at our service centre in person. The consumer must contact our customer service centre prior to returning the unit to us to enable our technicians to diagnose the fault over the phone.

Upon returning the unit to our service centre under warranty, should the unit be found not to be faulty, the consumer is liable for the freight cost to return the item to them. Should the unit be found to be faulty the freight cost to return the item to the consumer will be borne by the manufacturer. Our goods come with guarantees that cannot be excluded under the Australian Consumer Law. You are entitled to a replacement or refund for a major failure and for compensation for any other reasonably foreseeable loss or damage. You are also entitled to have the goods repaired or replaced if the goods fail to be of acceptable quality and the failure does not amount to a major failure.

DISCLAIMER

ALCOLIMIT RBT is recommended as a screening device only. The reading you receive is not legally binding in a court of law, ALCOLIMIT RBT is to be used only as a guide. The only true indication of your %BAC is a blood test.

We do not recommend driving or operating machinery with any amount of alcohol in your system. Heavy fines and penalties may apply and the presence of alcohol in your system may void your insurance.

The manufacturer gives no warranty, express or implied, as to the ability of ALCOLIMIT RBT to determine or detect intoxication or to accurately indicate your blood alcohol level.

MANUFACTURER'S DETAILS

For recalibration and technical support, please contact us at:

ALCOLIMIT BREATHALYSERS PTY. LTD.
P.O. BOX 164,
Burleigh Heads, QLD 4220

Ph: 1300 667 661
servicing@alcolimit.com.au
www.alcolimit.com.au

Disclaimer cont'd

The manufacturer assumes no responsibility in circumstances where a person who has used the device and received an indication of the presence of alcohol in his/her exhaled breath is later found to be under the influence of or their judgment has been impaired by alcohol; and will under no circumstances be liable for any loss or damage in contract or tort (including negligence) or otherwise suffered by any person arising directly or indirectly from the use of ALCOLIMIT RBT.

The manufacturer, importer or distributor takes no responsibility whatsoever for the use of this product for any reason. This product must not be used as a tool for determining whether a person is able to operate a vehicle or machinery. The intake of any alcohol will impair reflexes and judgment to operate motor vehicles and machinery.

For further information on ALCOLIMIT RBT and to view other models available, see our website: **www.alcolimit.com.au** or call our Customer Service line on **1300 667 661**.

RECALIBRATION SERVICE RECORD

Date of Recalibration	Service Details	Technician

For service records to be updated, please send your instructions with your sensor each time it is recalibrated.

Alternatively, you may request a Calibration Certificate at a cost of \$22 (recommended for workplaces).

