

WORKSafe®

Professional Grade Breathalyser

CERTIFIED TO THE SAME STANDARD AS POLICE BREATHALYSERS

- *Australian Standards AS3547* approved professional breath alcohol tester
- Heavy Duty Fuel Cell Sensor!
- Fast mode for rapid testing!
- Data saved to SD card for download to PC or printer

The AlcoLimit WORKSafe has been designed for durability, reliability, accuracy and convenience. AlcoLimit WORKSafe breathalyser incorporates a heavy duty fuel cell sensor for daily high volume testing.

It provides accurate and reliable results on-the-spot and is AS3547 Certified. Fast mode allows for rapid testing of employees using passive breath analysis.

Multiple Applications

For use in all workplaces, transport, construction, mining, airports, engineering & manufacturing. Ideal for screening all employees in safety sensitive fields. Also recommended for use at public events, school formals, clubs, restaurants and where RSA guidelines are enforced.



Sensor Technology

The precision and longevity of the electrochemical (fuel cell) sensor produces a short warm up time and fast measurement repetition. Microprocessor controls optimise processing speed and display time

ensuring the measurement is displayed quickly. Alcohol specific calibration technology eliminates cross reactivity with other gases.

Heavy Duty Sensor

A heavy duty fuel cell sensor provides accurate reliable results on the spot. Calibration is required every 6 months or 10,000 uses, whichever comes first.

Accurate Results

Self-check software provides a quick warm up and alerts when recalibration is due. There is no Auto-Shutdown feature thereby allowing continued testing after the recalibration warning. Conformance to **Australian Standard AS3547** ensures the accuracy, durability and

functionality of the AlcoLimit WORKSafe has been thoroughly tested.

Sensor Recognition & Flow Control Technology

AlcoLimit's Intelli-sensor Recognition Technology checks the sensor condition every time the breathalyser is initialised. An indication will be given if the sensor needs recalibration.

AlcoLimit's Flow Control Technology checks the flow rate of your breath ensuring an adequate air sample is received for analysis.

Fast Mode vs Normal Mode

Rapidly test high volumes of employees using fast mode (passive mode). Displays an indication of the absence or presence of alcohol in the donor's breath.



Product code: ALCO-065

PC SOFTWARE INCLUDED FREE !

AlcoLimit WORKSafe - PC Software and Printer option

The AlcoLimit WORKSafe Max30 Software and Printer allow for simple and easy downloading of test results at the end of the day's testing. Test results can be downloaded to the software and exported to Excel or a hardcopy can be printed on the heavy-duty portable printer. The AlcoLimit WORKSafe Max30 Software and Printer ensure your OH&S records are easily maintained. **The PC software package is included free-of-charge with the WORKSafe breathalyser.**

Portability

The AlcoLimit WORKSafe handset allows for greater portability in the field, providing opportunities for on-site testing in remote locations or 'incident-based' circumstances.

Simply conduct the day's testing with the AlcoLimit WORKSafe handset then download the data at your convenience.

Data Storage

The AlcoLimit WORKSafe handset stores 500 test results at a time which can then be downloaded to the PC software or printed directly to the printer. Data can be stored on an SD card for later reference.



OH&S Compliance

The stored data can be exported to a disk or printed and included in staff personnel folders or your organisation's WH&S register for accurate record keeping. This also allows for a reduction in human error when it comes to collecting, recording and transposing the test results.

Some organisations may print individual results for inclusion in staff personnel files in addition to downloading a summary of all results to a PC.

PC Software included (not available for MAC)

PC Software Connectivity

Easy to install software allows data to be downloaded to your PC. Test your employees then download and export the data to an Excel spreadsheet for printing and storage. Simple menus, searchable data fields and clear language make this ideal for all workplaces.

Download All Results

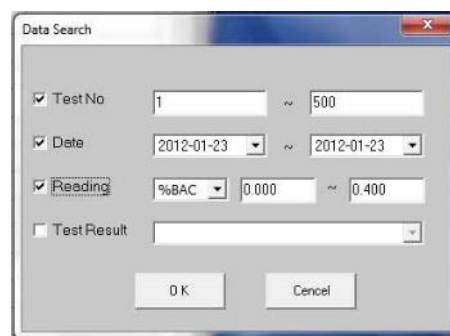
The software package stores and displays the handset (device) information including the serial number, software version and date of last calibration. This information is important for future reference in case of dispute by an employee.

Device Information

Serial Number : JABAP0001
Software Version : 9010 Rev:1.03
Last Calibration : 25-Oct-2011

iâ Test No	Date	Time	Reading	Test Result
001	25 - Oct - 2011	12:39:24	0.100 %BAC	FAIL
002	28 - Oct - 2011	16:13:10	0.000 %BAC	PASS
003	28 - Oct - 2011	16:13:46	0.054 %BAC	FAIL
004	28 - Oct - 2011	20:20:34	0.108 %BAC	FAIL

Data downloaded includes the Date, Time, %BAC reading and PASS/FAIL indication.



Extract & Select Results

The data search function enables the selection of specified data which can then be exported to an Excel spreadsheet.

A range of tests can be selected via:

Test number ie: 1-500

Test date range ie: 2012-01-23 - 2012-01-26

%BAC reading range ie: all results in the range 0.001-0.050 %BAC

Test result PASS/FAIL criteria

Printer option



Portable Printer

The WORKSafe Printer allows for printing of test results on an individual basis as well as printing results in bulk format.

Each printout displays the serial number and details of the WORKSafe handset used plus the date of last calibration.

The printer is compact, light weight and runs on AA batteries. (AC power pack also included) It is heavy duty and designed for high volume printing. Standard thermal paper is used making it easy to replace.

Individual Test Results

Printing individual test results is quick and easy. Simply connect the WORKSafe breathalyser handset to the printer, select the results in the memory you wish to print and the results are instantly printed on the portable printer.

This method provides the print out format below which contains a space for the Operator name and signature as well as the Subject name and signature. This is ideal for storing in personnel files or for secondary testing of a positive result.

```
Serial Number : JABAP0001
S/W Version : 9010 Rev:1.03
Last Calibration : 25-Oct-2011
Test Date : 23-Jan-2012
Time : 15:31:24
Result : 0.000 %BAC
```

Operator Name:

Operator Signature:

Subject Name:

Subject Signature:

Printing the Last Result Only

If you only wish to print individual test results for those who test positive, connect the WORKSafe breathalyser to the printer immediately after the test you wish to download and the last result can be printed.

The format of the printout is below:

```
<Test Results Report>
=====
Device Information
Product:AL9010
Serial Number:JABAP0001
S/W Version:9010 Rev:1.03
Last Calibration:25-Oct-2011
Print Date:23-Jan-2012, 15:49:13
=====
No    DATE        TIME        %BAC
-----
038  23-Jan-2012  15:47:49  0.000
```

Downloading Test Results

If you are testing people in bulk you have multiple options for printing the results after-the-fact.

Printing Multiple Results

At the end of a day's testing you can print all of your results in bulk. This is a convenient feature allowing you to keep a record of all results on file.

Results can be downloaded in batches of as many test results as you select or ALL tests.

Calibration / Servicing

Recalibration Service

Our in-house technicians specifically calibrate each sensor module in accordance with Australian Standards regulations for the Australian/New Zealand legal limits.

Regular calibration is required to maintain the specified accuracy of each device.

An in-built usage counter and an on-screen recalibration reminder make remembering to have your unit serviced simple.

Turnaround is approx. 3-4 working days.

Calibration Certificate

A Certificate of Calibration can be ordered when you have your regular recalibration performed, so as to keep your safety equipment register up to date and compliant with WH&S requirements.

Certificate of Attainment

For workplace testing it is recommended your staff are trained in the use of the breathalyser to ensure conformance to Australian Standards and WH&S regulations. A 'Certificate of Attainment' - "How to use and administer the AlcoLimit WORKSafe in a workplace" is available online at our e-learning suite.

	PRODUCT SPECIFICATIONS
Recommended Usage:	Professional
Sensor Type:	Advanced Fuel Cell Sensor
Accuracy:	Conforms to Australian Standard AS3547 +/- 0.005% at 0.050% BAC
Calibration	Calibrated to the Australian & New Zealand legal limits
Range %BAC :	0.000 - 0.500
Display:	3 decimal places. Large display backlit for night-time use
Warm-up time:	< 20 seconds
Breath Sampling Time:	5 seconds
Housing:	Shock Resistant Plastic
Weight:	198 grams
Power Source:	2 x 1.5v 'AA' Alkaline batteries (supplied)
Dimensions:	133 x 64 x 33mm
Warranty:	12 Month Limited Warranty
Recalibration Period:	Workplace use: every 6 months
Mouthpieces:	Disposable - 5 included
Accessories:	Mouthpieces Pack of 10 (ALCO-030), Pack of 50 (ALCO-020), Pack of 500 (ALCO-043)

Please note: product specifications are subject to change without notice for the purpose of product improvement



Workplace training is available online to certify employees to use the Enforcer AlcoLimit WORKSafe Breathalyser - Usage & Administration in a Workplace Environment (Certificate of Attainment)



Product Usage Videos are available on our product page.

See How-to-Use a WORKSafe Breathalyser and How to Change a Sensor.



DESCRIPTION	ITEM CODE
AlcoLimit WORKSafe Breathalyser Handset plus software <i>Includes: Breathalyser, 1 x sensor, 5 mouthpieces, fast mode funnel, carry pouch, PC download cable, wrist strap & software.</i>	ALCO-065
AlcoLimit WORKSafe Mouthpieces (Pack of 250)	ALCO-066
AlcoLimit WORKSafe Mouthpieces (Pack of 50)	ALCO-067
AlcoLimit WORKSafe Replacement Sensor	ALCO-068
AlcoLimit WORKSafe Thermal Printer	ALCO-069
AlcoLimit WORKSafe Sensor Recalibration Service Fee	ALCO-075
AlcoLimit WORKSafe Recalibration Certificate	ALCO-022
AlcoLimit WORKSafe Online Training Course	ALCO-300



AlcoLimit Breathalysers Pty. Ltd

P.O. Box 1106, Manly, N.S.W. 1655 Ph: 1300 667 661 or (02) 9939 3077 Fax: (02) 9938 3367
website: www.alcolimit.com.au email: sales@alcolimit.com.au